



**G.T.A. PERTH TRAVEL**

[www.gtaperthtravel.com](http://www.gtaperthtravel.com)

# PERTH CITY & NORTH COAST WONDERS

**5 DAYS & 4 NIGHTS**

---

**Five days.  
From shifting dunes  
to pink lakes,  
from gorges  
to island blues.**

**NRWA007**



<https://www.gtaperthtravel.com/perthcityandnorthcoastwonders>



NRWA007

# TABLE OF CONTENT



**02**  
—

OVERVIEW

**03**  
—

ITINERARY

**13**  
—

ACCOMODATION

**15**  
—

INCLUSIONS &  
EXCLUSIONS

**16**  
—

TRANSPORT

**17**  
—

PACKING LIST



## OVERVIEW

This five-day journey traces one of Western Australia's most iconic natural corridors—from shifting white sand dunes and ancient gorges to pink lakes, offshore islands, and historic harbours.

Travelling north along the Indian Ocean coastline, you'll watch sand move with the wind, explore the deep-red landscapes of Kalbarri National Park, and stand at canyon edges shaped by millions of years of geological time. The route continues through surreal colour contrasts at the Pink Lake lookout and the Pinnacles Desert, where limestone spires rise from golden sands like a landscape frozen in time.

The rhythm softens in the second half of the journey.

You'll cross open water to Rottnest Island, where turquoise seas and relaxed island life define the day, before returning to Fremantle's historic port streets and Swan Valley's wildlife encounters.

This is not a race between destinations, but a carefully paced experience—from raw wilderness to coastal calm, revealing Western Australia in layers, not highlights.



# PERTH CITY & NORTH COAST WONDERS



## ITINERARY

# PERTH CITY & NORTH COAST WONDERS



## DAY 1

### White Dunes & Coastal Light

Your journey begins with a relaxed morning departure from Perth, following the Indian Ocean Drive as the city fades into wide skies and rolling coastal plains. It is a drive that invites you to slow down, breathe deeply, and ease into the rhythm of Western Australia's northern coast.

### Sandboard/4WD in Lancelin Sand Dunes

Soon, the landscape opens into the iconic Lancelin Sand Dunes, a dazzling desert of pure, chalk-white sand sculpted by wind into soft, sweeping ridges.

You may choose to:

- sandboard down the slopes with a rush of adrenaline
- join a 4WD dune adventure, cresting wave-like hills of sand
- or simply wander and photograph the surreal desert scenery

The dunes stretch endlessly beneath a brilliant sky — a landscape that feels untouched, elemental, and wonderfully photogenic.







### **Lunch in Lancelin**

A relaxed lunch at a local favourite gives you time to unwind and chat with fellow travellers before the journey continues northward.

### **Nature's sculpture in motion**

Along the coastal highway, the land reveals one of its quiet yet unforgettable icons: the Greenough Leaning Tree.

Bent almost parallel to the ground by decades of relentless ocean winds, it stands as a testament to resilience — a living sculpture shaped over time into its own kind of beauty.



### **Arrival in Geraldton**

By late afternoon, coastal light softens over Geraldton as we arrive in this vibrant seaside city, where modern architecture meets the relaxed rhythm of ocean life.

Here, you'll check into The Gerald Apartment Hotel (or similar standard), our hand-selected accommodation for the night.

Settle in, breathe in the sea breeze, and enjoy a night of comfort as you prepare for the majestic landscapes that await tomorrow.



## DAY 2

### Gorges, Clifftops & a Lake Painted in Pink

Today's journey leads into some of Western Australia's most dramatic natural wonders — a blend of ancient geology, raw power, and ethereal beauty.

#### Kalbarri National Park

Heading inland, the colours shift from coastal greens to burnt orange and deep red as we enter Kalbarri National Park.

#### Nature's Window

Your first stop is the famous Nature's Window, a naturally sculpted sandstone arch framing the winding Murchison River below. Through this window, the landscape looks like a living painting — layers of rock, shifting light, and ancient riverbeds stretching into the distance.



#### Kalbarri Skywalk

Next, step onto the impressive Kalbarri Skywalk, where two cantilevered viewing platforms extend dramatically over the edge of the gorge.

The view is breathtaking: sheer red cliffs plunging into shadowed valleys, with the vast Australian wilderness unfurling into the horizon.

The feeling of standing “in the air” above this ancient canyon is something few forget.







### **Natural Bridge & Island Rock**

Returning to the coast, you'll witness the wave-carved formations of Natural Bridge and Island Rock, where the sea crashes against towering limestone cliffs in a powerful, echoing rhythm.

The views are dramatic, elemental — the very edge of a continent meeting the restless Indian Ocean.



### **Hutt Lagoon (Pink Lake)**

By afternoon, the landscape transforms again into one of Western Australia's most iconic sights: the Pink Lake.

Here, the water glows in rich hues of rose, coral, and blush — its colour shifting with sunlight, clouds, and season.

Standing beside it feels like stepping into another world, one painted with colours too beautiful to be real.





## DAY 3

### Skies, Stone Forests & the Way Home

#### Cervantes & Lobster Shack

Travelling south, arrive at the charming seaside town of Cervantes, home of the well-known Lobster Shack, an iconic family-run establishment perched right by the waterfront.

Inside, the atmosphere is lively yet laid-back—part seafood factory, part beachside eatery—where the scent of grilled lobster lingers in the air alongside ocean breezes drifting through open windows.



Indulge in their signature Western Rock Lobster, harvested daily from local waters. Whether you prefer it grilled with garlic butter, served chilled with lemon, or paired with crispy chips and fresh salad, every bite captures the purity and sweetness of the sea. With floor-to-ceiling views of the bay, lunch becomes a serene coastal moment—simple, honest, and deeply satisfying.



### **Pinnacles Desert**

In Nambung National Park, thousands of limestone pillars rise from golden sand — each shaped over thousands of years by wind, water, and shifting earth.

Walking among the Pinnacles feels like entering a natural sculpture garden, a silent stone forest glowing under the desert sun.

As the afternoon softens, we begin the journey back to Perth.

Lean back, watch the scenery change once more, and let the memories of dunes, cliffs, pink waters, and wind-carved stone settle gently into your heart.





## DAY 4

### **BLUE ISLAND . HARBOR CULTURE . A CLOSE ENCOUNTER WITH QUOKKAS**

#### **The Happiest Island in the World**

As you sail toward Rottnest Island, the sunlight dances across the water, setting a calming rhythm for the journey.

The island has no private cars — only bicycles, sunshine, and an untouched stretch of coastline.

Its most beloved residents, the quokkas, are famous for their naturally “smiling” expressions that melt your heart at first sight. Their gentle, curious nature makes Rottnest Island feel like the most relaxing and carefree sanctuary for travelers.

Lunch is enjoyed right on the island, where the sea breeze is light, the pace is slow, and time itself feels softer and more generous here.





## **The History and Soul of a Harbour City**

In the afternoon, you'll return to the mainland and continue your journey into Fremantle.

This port city is the cultural soul of Western Australia — a place where art, history, and coastal living intertwine.

Along its streets stand colonial-era buildings and red-brick warehouses; the scent of coffee drifts from the corners, lively conversations echo through the market, and at the waterfront, fishing boats dock as seabirds circle above.



---

## DAY 5

### Wildlife Encounters • City Sunset Glow

#### A Place Where You Truly Get Close to Australian Wildlife

Soon after, the journey leads you to Caversham Wildlife Park, a place first-time visitors to Australia look forward to the most — and a magical wonderland in the eyes of children.

Kangaroos lounge lazily on the grass under the sun, lifting their heads to glance at you as you walk by, as if greeting you with a soft “good morning.” Koalas cling quietly to the branches, their round eyes observing the world with calm curiosity.

The farm show reveals another side of Australian life — sheepdogs sprinting across the field, farmers skilfully separating the flocks — scenes you’ll never find in the city. Here, travellers not only get close to the animals, but also get close to the everyday life of Australia.







### **Kings Park | Above the City**

Back on the mainland, Kings Park offers a sweeping view over Perth and the Swan River.

One of the largest inner-city parks in the world, it showcases native Western Australian flora and holds profound cultural significance for the Noongar people.

As the sun lowers, the city appears calm, distant, and beautifully framed.

### **Blue Boat House | A Gentle Farewell**

The journey ends beside calm waters and soft light — a final moment to pause, reflect, and carry the landscape with you as you return to Perth.



## ACCOMMODATION

# THE GERALD APARTMENT HOTEL

The Gerald Apartment Hotel is where modern comfort meets the breezy elegance of Western Australia's Coral Coast. Situated in the vibrant centre of Geraldton, this boutique hotel offers a refined stay designed for travellers who appreciate style, space, and a touch of luxury after a day exploring the region's extraordinary landscapes.

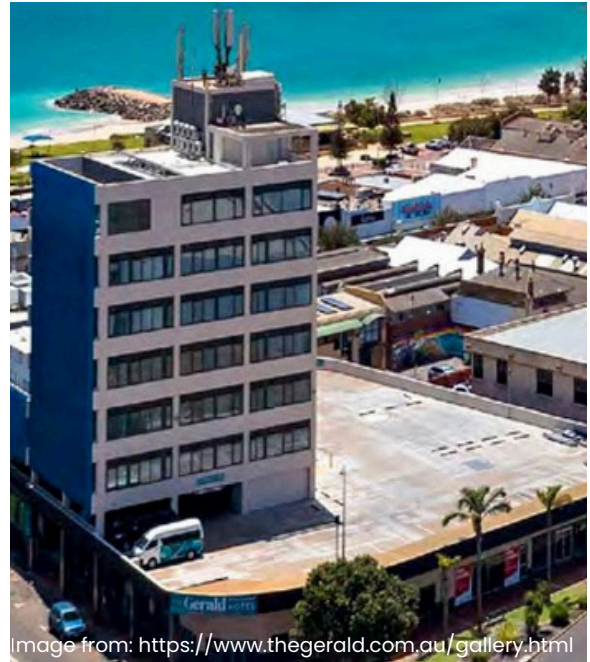


Image from: <https://www.thegerald.com.au/gallery.html>

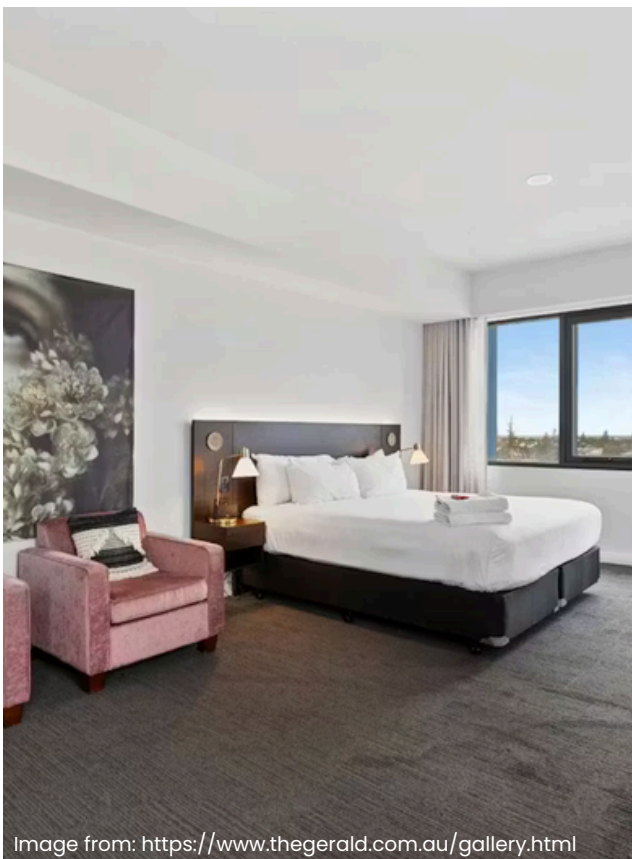


Image from: <https://www.thegerald.com.au/gallery.html>

The spacious ensuite bathroom includes a refreshing rain shower and eco-friendly toiletries, creating a soothing space to unwind.

Designed for comfort and convenience, the hotel provides:

- Complimentary Wi-Fi
- Air-conditioning
- Tea and coffee facilities

The Gerald Apartment Hotel offers an ideal base for your north coast adventure.

**THE GERALD  
APARTMENT  
HOTEL OR SIMILAR  
STANDARD**





# RYDGES HOTELS & RESORTS

Located in the heart of Fremantle's historic port district, Rydges Fremantle blends modern comfort with the maritime spirit of one of Western Australia's most character-rich towns. Overlooking the Indian Ocean or the lively harbour, the hotel offers a refined base from which to explore Fremantle's cafés, markets, and heritage streets.



IMAGE BY: RYDGES HOTEL & RESORTS FACEBOOK



Guest rooms are spacious and light-filled, featuring plush bedding, modern bathrooms, climate control, and work-friendly layouts. The hotel's coastal setting brings sea breezes and open views, while its contemporary interiors provide a calm retreat from the energy of the port below.

Whether enjoyed at sunrise over the water or in the evening as harbour lights come alive, Rydges Fremantle delivers a relaxed yet polished stay—where ocean air and urban culture meet effortlessly.

**RYDGES HOTELS &  
RESORTS OR  
SIMILAR STANDARD**

# INCLUSIONS AND EXCLUSIONS



## KNOW YOUR ADVENTURE IN WESTERN AUSTRALIA

**We have meticulously designed every detail to ensure you embark on your journey with ease, without worrying about the tedious preparations. The items listed below are all included in the itinerary, allowing you to focus fully on experiencing nature and enjoying your trip.**

### **Costs include:**

- Five Days Round-trip comfortable transport from Perth CBD
- Four nights accommodation at a carefully selected, legal and comfortable stay
- Entrance tickets, including: Kalbarri National Park, Nambung National Park (The Pinnacles) and Caversham Wildlife Park
- Round-trip ferry tickets to Rottnest Island
- Visit to Lancelin Sand Dunes
- Visit to Hutt Lagoon (Pink Lake)
- Professional guide throughout the journey
- All itinerary planning, transportation, guiding services, and selected tasting fees (depending on location)

### **Costs do not include:**

- Breakfast
- Sand-boarding or 4WD Dune Experience
- Lunch at Lobster Shack
- Meals Not Specified
- Personal expenses and extra drinks
- Travel insurance and personal spending
- Any activity or expense not explicitly mentioned in the inclusions



# TRANSPORT IN GTA PERTH TRAVEL



## ABOUT YOUR VEHICLE

- Equipped with all standard government-mandated safety features for your peace of mind
- 99% UV-protection window tinting, specially designed for Western Australian weather
- Automatic doors for convenient and easy access
- Each seat fitted with USB-C charging ports and individual reading lights
- Features a sunroof and individual cabin temperature control for passenger comfort
- Spacious interior with ample luggage space to accommodate your travel needs



# PACKING LIST

**FIND THE  
PERFECT  
GEAR FOR  
YOUR  
JOURNEY**



**This five-day journey spans two distinct landscapes of Western Australia. To ensure you remain comfortable in every setting, bringing the right clothing and essentials will greatly enhance your travel experience.**

**In the north, average summer nights sit around 18–24°C, while winter nights can drop to 3–8°C (especially in the gorge regions, where it can feel noticeably cooler).**

**Below are our recommended items to bring:**

- 01    Lightweight outdoor clothing and slip-resistant shoes**

---
- 02    Light jacket or warm clothing**

---
- 03    Sunglasses and sunscreen**

---
- 04    Reusable water bottle**

---
- 05    Camera or mobile phone**

---
- 06    Personal medications, sunscreen and insect repellent**

---
- 07    Personal toiletries and daily necessities**

---

**Kind reminder:** Some locations feature sand, gravel trails, or uneven natural surfaces. Comfortable, sturdy footwear is highly recommended; high heels or delicate shoes are not suitable for this itinerary.





**Where dunes shift,  
limestone stands,  
and the ocean leads  
five days through Western Australia's wild heart.**

G.T.A. PERTH TRAVEL  
[www.gtaperthtravel.com](http://www.gtaperthtravel.com)  
[booking@gtaperthtravel.com](mailto:booking@gtaperthtravel.com)